



Professional Mixing Controller

**PCV-0002**

**OWNER'S MANUAL**

**VESTAX CORPORATION**

1-18-6 Wakabayashi, Setagaya-ku, Tokyo 154-0023 Japan  
Phone:03-3412-7011 Fax:03-3412-7013  
Web:www.vestax.com

**VESTAX (Europe)Ltd.**

Unit 5 Riverwey Industrial Park Alton, Hampshire GU34 2QL England, U.K  
Phone:(0)1420-83000 Fax:(0)1420-80040  
Web:www.vestax.co.uk

**Vestax Technical Center of America**

8489 W.Third Street Ste.1044 Los Angeles CA 90048  
Phone:1-323-801-2111 Fax:1-323-801-2112

**Vestax Europe Technical Support**

Rheinstr.213 D-53332 Bornheim Germany  
Phone:49(0)2222-95-23-72 Fax:49(0)2222-95-23-74

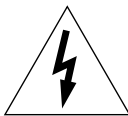
---

# CONGRATULATIONS!

The PCV-002 is a high profile mixer designed to meet various professional requirements of today's dance music DJ's. Please read this owner's manual carefully before you start to use your mixer, so that you will fully understand all of the special features and enjoy the full use of the product.

## CONTENTS

C A U T I O N .....	2
IMPORTANT SAFEGUARDS .....	3
F E A T U R E S .....	4
CONTROLS AND FUNCTIONS .....	5
T O P   P A N E L .....	5
How to change the fader unit .....	6
R E A R   P A N E L .....	7
CONNECTION DIAGRAM .....	8
SPECIFICATIONS .....	8

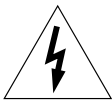


### CAUTION

RISK OF ELECTRIC SHOCK DO NOT OPEN



**CAUTION : TO REDUCE THE RISK OF ELECTRIC SHOCK  
DO NOT REMOVE COVER (OR BACK)  
NO USER-SERVICEABLE PARTS INSIDE  
REFER SERVICING TO QUALIFIED SERVICE PERSONNEL**



The lightning flash with arrowhead symbol, within an equilateral triangle, is intended to alert the user to the presence of uninsulated "dangerous voltage" within the product's enclosure that may be of sufficient magnitude to constitute a risk of electric shock to persons.



The exclamation point within an equilateral triangle is intended to alert the user to the presence of important operating and maintenance (servicing) instructions in the literature accompanying the appliance.

**TO REDUCE THE RISK OF FIRE OR ELECTRIC SHOCK, DO NOT  
EXPOSE THIS APPLIANCE TO RAIN OR MOISTURE.**

---

# IMPORTANT SAFEGUARDS

## READ BEFORE OPERATING EQUIPMENT

This product was designed and manufactured to meet strict quality and safety standards. There are, however, some installation and operation precautions which you should be particularly aware of.

1. Read instructions-All the safety and operating instructions should be read before the appliance is operated.
2. Retain instructions-The safety and operating instructions should be retained for future reference.
3. Heed Warnings-All warnings on the appliance and in the operating instructions should be adhered to.
4. Follow Instructions-All operating and use instructions should be followed.
5. Cleaning-Do not use liquid cleaners or aerosol cleaners. Use a damp cloth for cleaning.
6. Attachments-Do not use attachments not recommended by the product manufacturer as they may cause hazards.
7. Water and Moisture-Do not use this product near water-for example, near a bath tub, wash bowl, kitchen sink, or laundry tub, in a wet basement, or near a swimming pool, and the like.
8. Accessories-Do not place this product on an unstable cart, stand, tripod, or table. The product may fall, causing serious injury to a child or adult, and serious damage to the appliance. Use only with a cart, stand, tripod, bracket, or table recommended by the manufacturer, or sold with product. Any mounting of the appliance should follow the manufacturer's instructions, and should use a mounting accessory recommended by the manufacturer.
9. This product should never be placed near or over a radiator or heat register. This product should not be placed in a built-in installation such as a bookcase or rack unless proper ventilation is provided or the manufacturer's instructions have been adhered to.
10. Power sources-This product should be operated only from the type of power source indicated on the marking label. If you are not sure of the type of power supply to your home, consult your appliance dealer or local power company.
11. Lightning-For added protection of this product during a lightning storm, or when it is left unattended and unused for long periods of time, unplug it from the wall outlet. This will prevent damage to the product due to lightning and power-line surges.
12. Overloading-Do not overload wall outlets and extension cords as this can result in a risk of fire or electric shock.
13. Object and Liquid Entry-Never push objects of any kind into this product through openings as they may touch dangerous voltage points or short-out parts that could result in a fire or electric shock. Never spill liquid of any kind on the product.
14. Servicing-Do not attempt to service product yourself as opening or removing covers may expose you to dangerous voltage or other hazards. Refer all servicing to qualified personnel.

- 
15. **Damage Requiring Service**-Unplug this product from the wall outlet and refer servicing to qualified service personnel under the following conditions:
- a. When the power-supply cord or plug is damaged.
  - b. If liquid has been spilled or objects have fallen into the product.
  - c. If the product has been exposed to rain or water.
  - d. If the product does not operate normally by following the operating instructions. Adjust only those controls that are covered by the operating instructions as an improper adjustment of other controls may result in damage and will often require extensive work by a qualified technician to restore the product to its normal operation.
  - e. If the product has been dropped or cabinet has been damaged.
  - f. When the product exhibits a distinct change in performance this indicates need for service.
16. **Replacement Parts**-When replacement parts are required, be sure the service technician has used replacement parts specified by the manufacturer or have the same characteristics as the original parts. Unauthorized substitutions may result in fire, electric shock or other hazards.
17. **Safety Check**-Upon completion of any service or repairs to product, ask the service technician to perform safety checks to determine that the product is in proper operating condition.
18. **Carts and Stands**-The appliance should be used only with a cart stand that is recommended by manufacturer.
19. An appliance and cart combination should be moved with care. Quick stops, excessive force, and uneven surfaces may cause the appliance and cart combination to overturn.



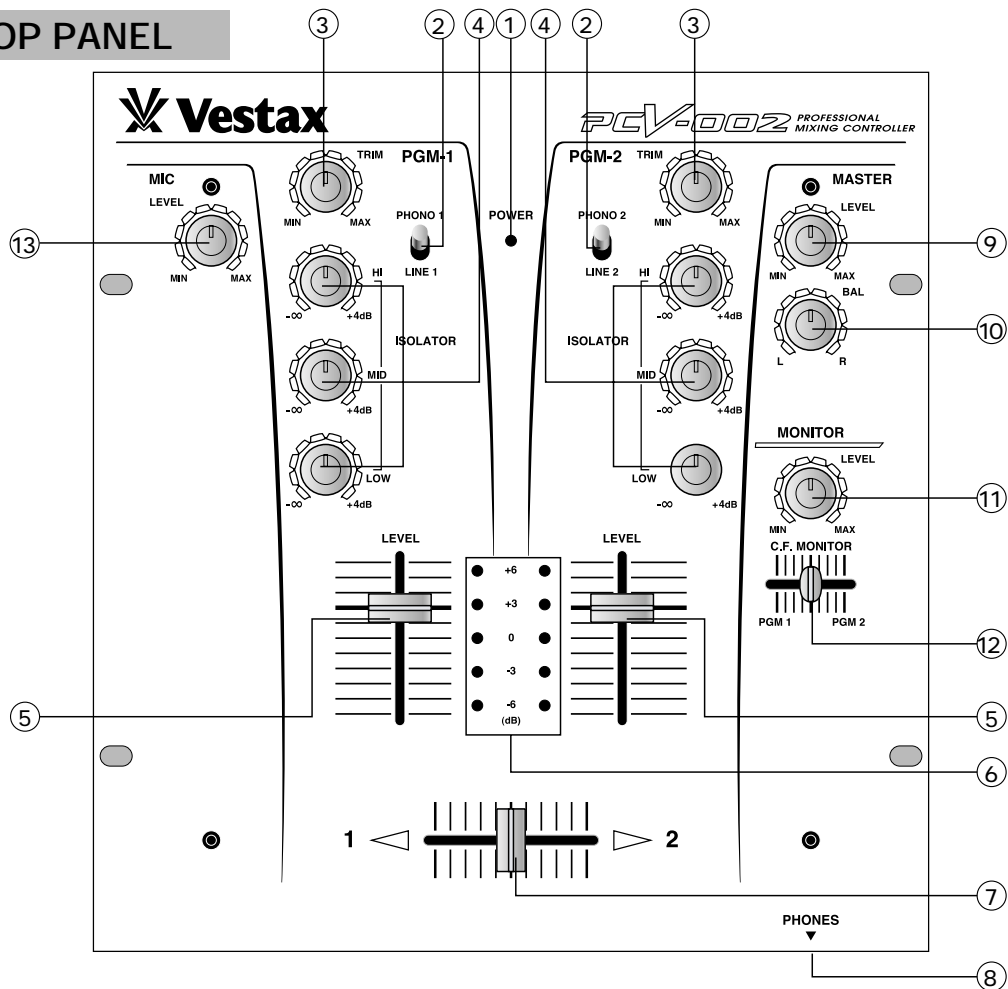
---

## FEATURES

- The PCV-002 is equipped with 3 band isolators on each channel, allowing DJs to mix in the most creative way.
- The EQ curve has been refined by our manufacturing team to offer the sweetest sounding, and most striking EQ available in any mixer at this price point.
- The cross fader of the PCV-002 is the ultra smooth CF-R US, which is the best quality fader available in this class.
- To give young DJs all over the world a mixer that can grow with their career, the cross-fader in the PCV-002 can be upgraded to the most durable Vestax Pro-fader, CF-PCV, for pro-level performance.

# CONTROLS AND FUNCTIONS

## TOP PANEL



- ① **POWER LED**  
The LED is lit when power is on.
- ② **INPUT SELECT SWITCH**  
Used to select the input (LINE or PHONO ) to be sent to each PGM channel.
- ③ **TRIM CONTROL**  
Adjusts the input level of each channel.
- ④ **ISOLATOR (HI,MID,LOW)**  
Cuts and boosts each frequency range. The level is flat when this knob is set at 12 o'clock.
- ⑤ **INPUT FADER**  
Used to adjust the input level of each program. Usually set at the 7-8 position.
- ⑥ **INPUT LEVEL METER**  
The LED level meters indicate the input signal level of each PGM channel.
- ⑦ **CROSS FADER**  
When the input level of PGM1 and PGM2 are properly set, PGM1 will be heard with the cross fader set to the left side. PGM2 will be heard with the cross fader set to the right side. When the cross fader is set in the center, both programs will be heard. This is a detachable fader for the ease of replacement with "CF-RUS" "CF-R" or "CF-PCV" when it is worn out.
- ⑧ **PHONES JACK**  
Use this jack to connect the head phones. Head phones from 8 ohm to 600 ohm can be used. 150 ohm is recommended.
- ⑨ **MASTER LEVEL**  
Adjusts the signal level output from the LINE OUT jack on the rear panel.
- ⑩ **MASTER BALANCE**  
Adjusts the signal balance of the left and right side of the outputs from the LINE OUT jack on the rear panel.
- ⑪ **MONITOR LEVEL**  
Adjusts the head phone output level.
- ⑫ **MONITOR SELECT FADER**  
When the monitor levels of PGM1 and PGM2 are properly set, PGM1 will be monitored in the headphone with the fader set to the left side and PGM2 will be monitored in the head phone with the fader set to the right side. When the fader is set in the center, both programs will be monitored in the head phone.
- ⑬ **MIC LEVEL**  
Adjusts the input level from all microphone inputs.

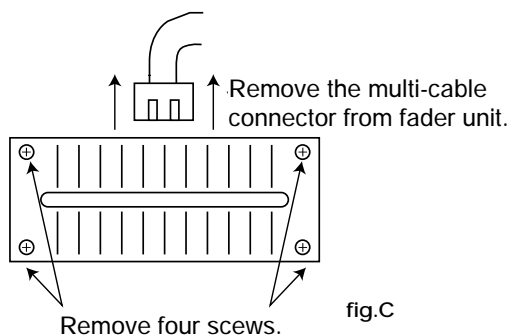
## How to change the fader unit.

### ■HOW TO REMOVE THE TOP PANEL

- ① Remove all fader knobs and the 4 screws which fix the top panel.(see fig.A)
- ② Remove the top panel.

### ■HOW TO CHANGE THE FADER UNIT

- ① Remove the screws on the fader panel.(see fig.B)
- ② Remove the fader unit from position in mixer.
- ③ Carefully remove the multi-cable connector from fader unit.(see fig.C)
- ④ Attach multi-cable connector to new fader unit.
- ⑤ Position the fader unit carefully and secure with screws.



You can replace the CF unit with "CF-RUS", "CF-R" or "CF-PCV".


### ■HOW TO REPLACE THE CF UNIT WITH "CF-PCV"

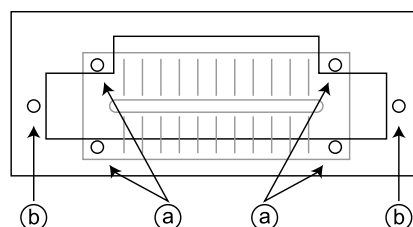
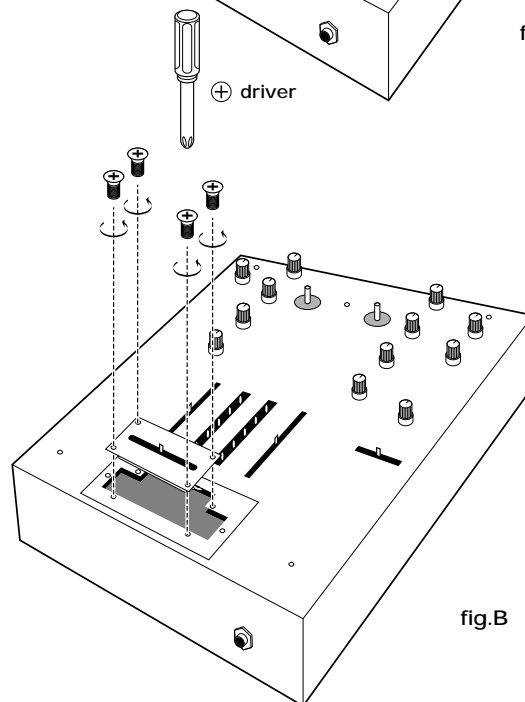
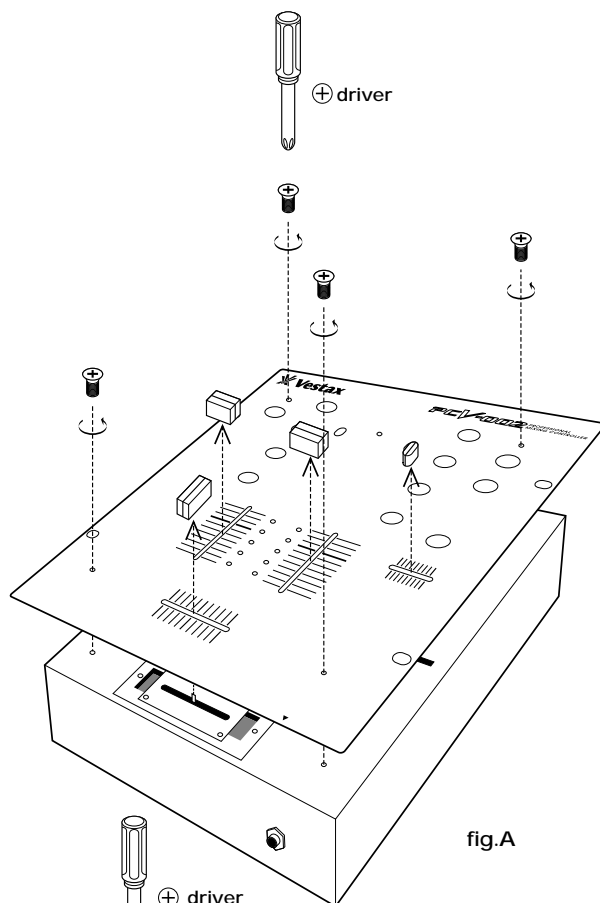
When the fader unit is replaced, please see fig.C. Place the fader unit in the proper position and fix it with two screws.(fig.D-⑥)

#### CAUTION

There is a switch for "CF-PCV" unit. When "CF-PCV" unit is installed, set the switch to "PCV" mode.

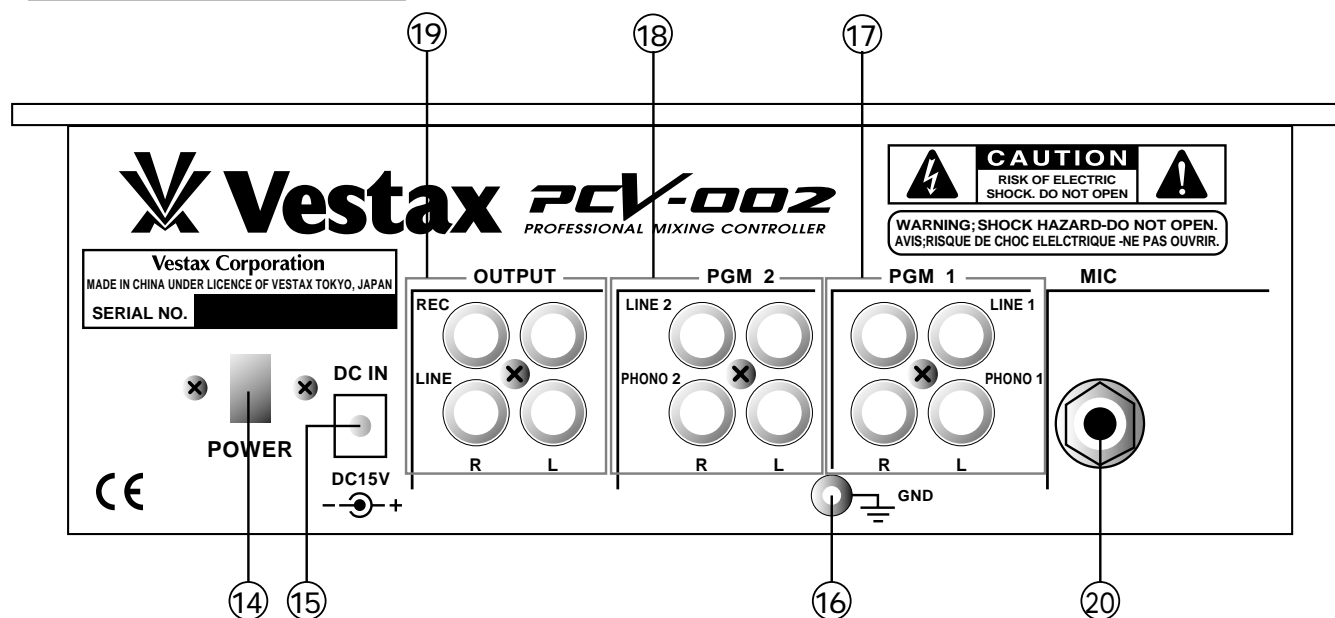
#### CAUTION

When the fader unit is replaced, do not loosen the screws with  marking.



- ①: CF-RUS or CF-R
- ②: CF-PCV

## REAR PANEL



### ⑭ POWER SWITCH

The POWER LED that is located on the top panel is lit when on.

### ⑮ DC IN

Connect to the DC-15 AC adapter.

### ⑯ GND TERMINAL

Connect this terminal to the ground lead of the turntable. This helps to reduce noise and hum.

### ⑰ INPUT JACK 1

Used for PGM1 input. Connect turntable equipped with a MM pickup cartridge to PHONO input. CD players, tape decks, DATs, MDs etc., should be connected to LINE input. Line level musical instruments with stereo outputs such as Rhythm Machines or Samplers should also be connected to line inputs.

### ⑱ INPUT JACK 2

Used for PGM2 input. Connect as for ⑰.

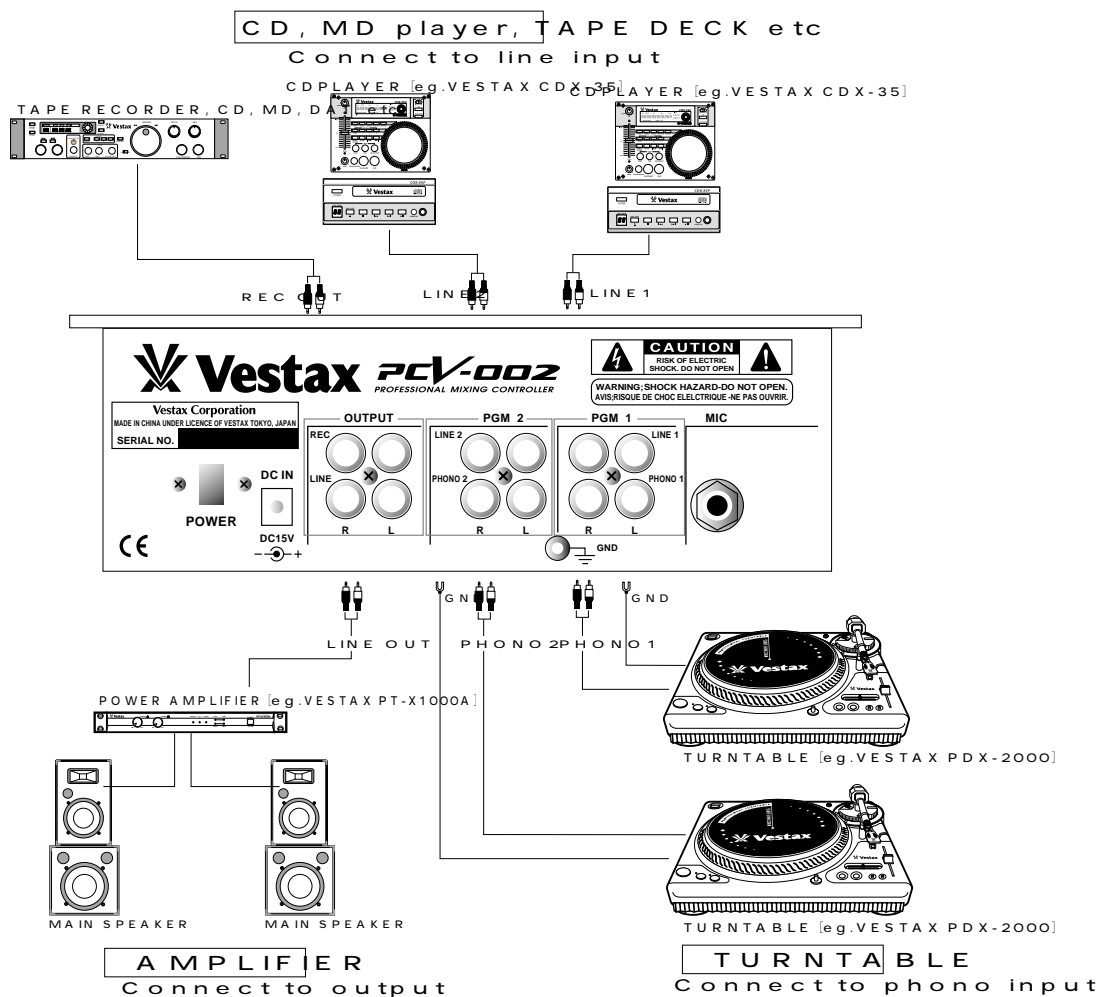
### ⑲ OUTPUT JACK

Connect to the input of a power amplifier. You can also use another LINE OUT when you need to have an output besides the main output.

### ⑳ MIC INPUT JACK

Input jacks of connection of a microphone.

# CONNECTION DIAGRAM [example]



## SPECIFICATIONS

		NOMINAL INPUT	IMPEDANCE
INPUT SECTION	PHONO 1, 2 (RCA PIN JACK)	-42dBv	470K $\Omega$
	LINE 1, 2 (RCA PIN JACK)	-10dBv	470K $\Omega$
	MIC (1/4" PHONE JACK)	-54dBv	3.3K $\Omega$
		NOMINAL OUTPUT	IMPEDANCE
OUTPUT SECTION	LINE OUT (RCA JACK)	0dBv	220 $\Omega$
		MAXIMUM OUTPUT	IMPEDANCE
	HEADPHONE (1/4" PHONE JACK)	70mW (47 $\Omega$ load)	>8 $\Omega$
FREQUENCY RESPONSE		20Hz ~ 20KHz	
CROSS TALK		>100dB	
S/N RATIO		<-82dB	
POWER SUPPLY		DC15V 500mA	
DIMENSIONS(W×H×D)		248×105×261(mm)	
WEIGHT		3.5kg	