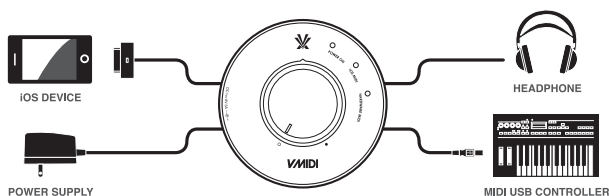


■INTRODUCING THE VMIDI

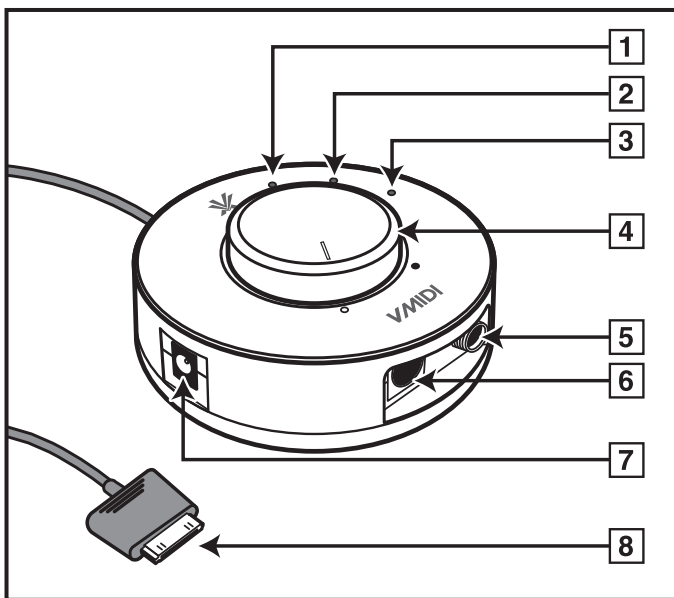
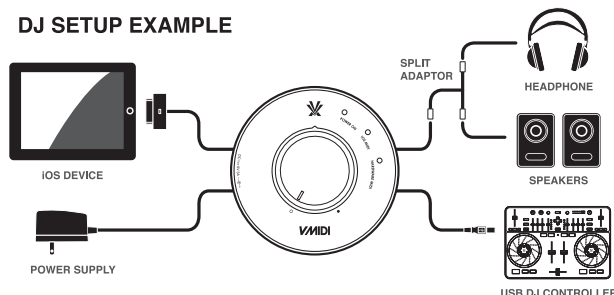
V-MIDI is the only Core MIDI interface to enable musicians, producers and DJs to control Core MIDI compatible iOS apps with their USB MIDI hardware of choice and power both devices at the same time. Either that choice being drum pads, keyboards, synths, DJ controllers, or any other USB MIDI hardware, V-MIDI simply picks up the USB MIDI signal and converts it via 30pin connection to iOS devices. With the included power adaptor, V-MIDI charges iOS devices and powers USB MIDI hardware simultaneously, which is ideal for long studio sessions and on-stage performance.

■SETUP EXAMPLE

MUSIC SETUP EXAMPLE



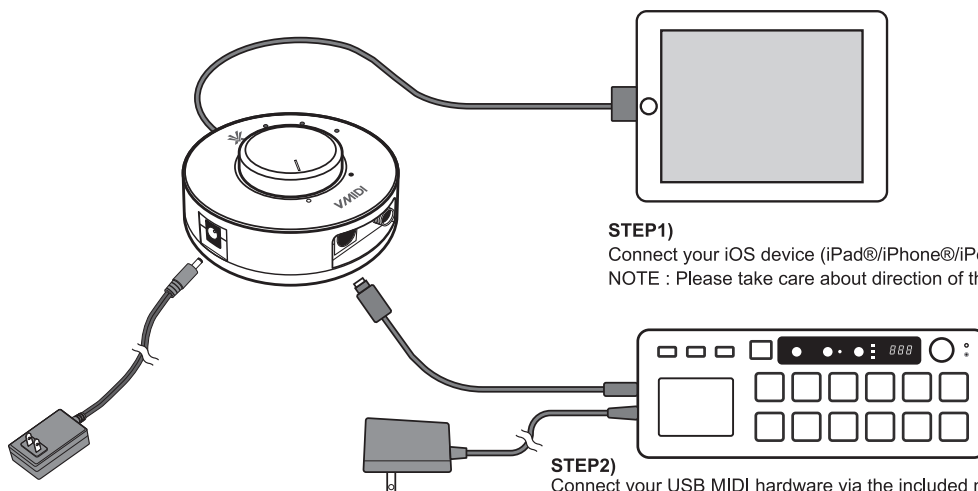
DJ SETUP EXAMPLE



■FUNCTIONS

- 1. POWER LED**
Indicates the power status.
- 2. iOS MIDI LED**
Indicates the MIDI data transmission from iOS device.
- 3. HARDWARE MIDI LED**
Indicates the MIDI data transmission from USB MIDI hardware.
- 4. LEVEL**
Adjust the monitor output volume.
- 5. MONITOR OUTPUT**
Connect here your headphone or speaker.
- 6. USB MIDI HARDWARE**
Connect here your USB MIDI hardware via the included mini DIN (6pin) to USB cable.
NOTE : This DIN jack (6) is not a regular MIDI jack.
It can only be used to connect a USB MIDI device, by using the special included cable.
- 7. POWER ADAPTOR**
Connect the included Vestax SDC-6 (DC6V 3A) power adaptor to this socket.
- 8. DOCK CABLE**
Connect your iOS device (iPad®/iPhone®/iPod touch®).

■SETUP



STEP1)

Connect your iOS device (iPad®/iPhone®/iPod touch®).
NOTE : Please take care about direction of the connector.

STEP2)

Connect your USB MIDI hardware via the included mini DIN (6pin) to USB cable.
NOTE : Depending on the USB MIDI device, connection of the adapter is required.

STEP3)

Connect the included Vestax SDC-6 (DC6V 3A) power adaptor.

SPECIFICATIONS

[Monitor output]

1/4 inch Stereo Phone connector x1

Frequency response : 20Hz to 20kHz (±1.5dB)

[MIDI I/O]

Mini DIN (6pin) connector x1

Dock connector (30pin) x1

[Other]

Power supply : DC6V 3A (Vestax SDC-6)

Power consumption : 17W (AC100V ~ 230V) (During the iOS device charge)

Dimensions / Weight : 95(W) x 95(D) x 38(H)mm / 165g

[Included items]

Owner's manual, Power Adaptor (Vestax SDC-6), Mini DIN (6pin) to USB cable,

Headphone convert plug, Stereo split cable (2 types), Insulator

[Recommended system requirements]

OS : iOS 5.1 or later

iOS device : iPad®, iPad 2®, New iPad®, iPhone 4S®, iPhone 4®, iPhone 3GS®, iPod touch® (3rd and 4th generation)

CAUTION



The lightning flash with arrowhead symbol, within an equilateral triangle, is intended to alert the user to the presence of uninsulated "dangerous voltage" within the product's enclosure that may be of sufficient magnitude to constitute a risk of electric shock to persons.



The exclamation point within an equilateral triangle is intended to alert the user to the presence of important operating and maintenance (servicing) instructions in the literature accompanying the appliance.

TO REDUCE THE RISK OF FIRE OR ELECTRIC SHOCK, DO NOT EXPOSE THIS APPLIANCE TO RAIN OR MOISTURE

NOTE

This equipment has been tested and found to comply with the limits for a Class B digital device, pursuant to Part 15 of the FCC Rules. These limits are designed to provide reasonable protection against harmful interference in a residential installation. This equipment generates, uses and can radiate radio frequency energy and, if not installed and used in accordance with the instructions, may cause harmful interference to radio communications. However, there is no guarantee that interference will not occur in a particular installation. If this equipment does cause harmful interference to radio or television reception, which can be determined by turning the equipment off and on, the user is encouraged to try to correct the interference by one or more of the following measures.

- Reorient or relocate the receiving antenna.
- Increase the separation between the equipment and receiver.
- Connect the equipment into an outlet on a circuit different from that to which the receiver is connected.
- Consult the dealer or an experienced radio/TV technician for help.

NOTE

Changes or modifications may cause this unit to fail to comply with Part 15 of the FCC Rules and may void the user's authority to operate the equipment.

IMPORTANT SAFEGUARDS

READ BEFORE OPERATING EQUIPMENT

This product was designed and manufactured to meet strict quality and safety standards. There are, however, some installation and operation precautions which you should be particularly aware of.

1. Read instructions-All the safety and operating instructions should be read before the appliance is operated.
2. Retain instructions-The safety and operating instructions should be retained for future reference.
3. Heed Warnings-All warnings on the appliance and in the operating instructions should be adhered to.
4. Follow Instructions-All operating and use instructions should be followed.
5. Cleaning-Do not use liquid cleaners or aerosol cleaners. Use a damp cloth for cleaning.
6. Attachments-Do not use attachments not recommended by the product manufacturer as they may cause hazards.
7. Water and Moisture-Do not use this product near water-for example, near a bath tub, wash bowl, kitchen sink, or laundry tub, in a wet basement, or near a swimming pool, and the like.
8. Accessories-Do not place this product on an unstable cart, stand, tripod, or table. The product may fall, causing serious injury to a child or adult, and serious damage to the appliance. Use only with a cart, stand, tripod, bracket, or table recommended by the manufacturer, or sold with product. Any mounting of the appliance should follow the manufacturer's instructions, and should use a mounting accessory recommended by the manufacturer.
9. This product should never be placed near or over a radiator or heat register. This product should not be placed in a built-in installation such as a bookcase or rack unless proper ventilation is provided or the manufacturer's instructions have been adhered to.
10. Power sources-This product should be operated only from the type of power source indicated on the marking label. If you are not sure of the type of power supply to your home, consult your appliance dealer or local power company.
11. Lightning-For added protection of this product during a lightning storm, or when it is left unattended and unused for long periods of time, unplug it from the wall outlet. This will prevent damage to the product due to lightning and power-line surges.
12. Overloading-Do not overload wall outlets and extension cords as this can result in a risk of fire or electric shock.
13. Object and Liquid Entry-Never push objects of any kind into this product through openings as they may touch dangerous voltage points or short-out parts that could result in a fire or electric shock. Never spill liquid of any kind on the product.
14. Servicing-Do not attempt to service product yourself as opening or removing covers may expose you to dangerous voltage or other hazards. Refer all servicing to qualified personnel.